

A19C
A19G

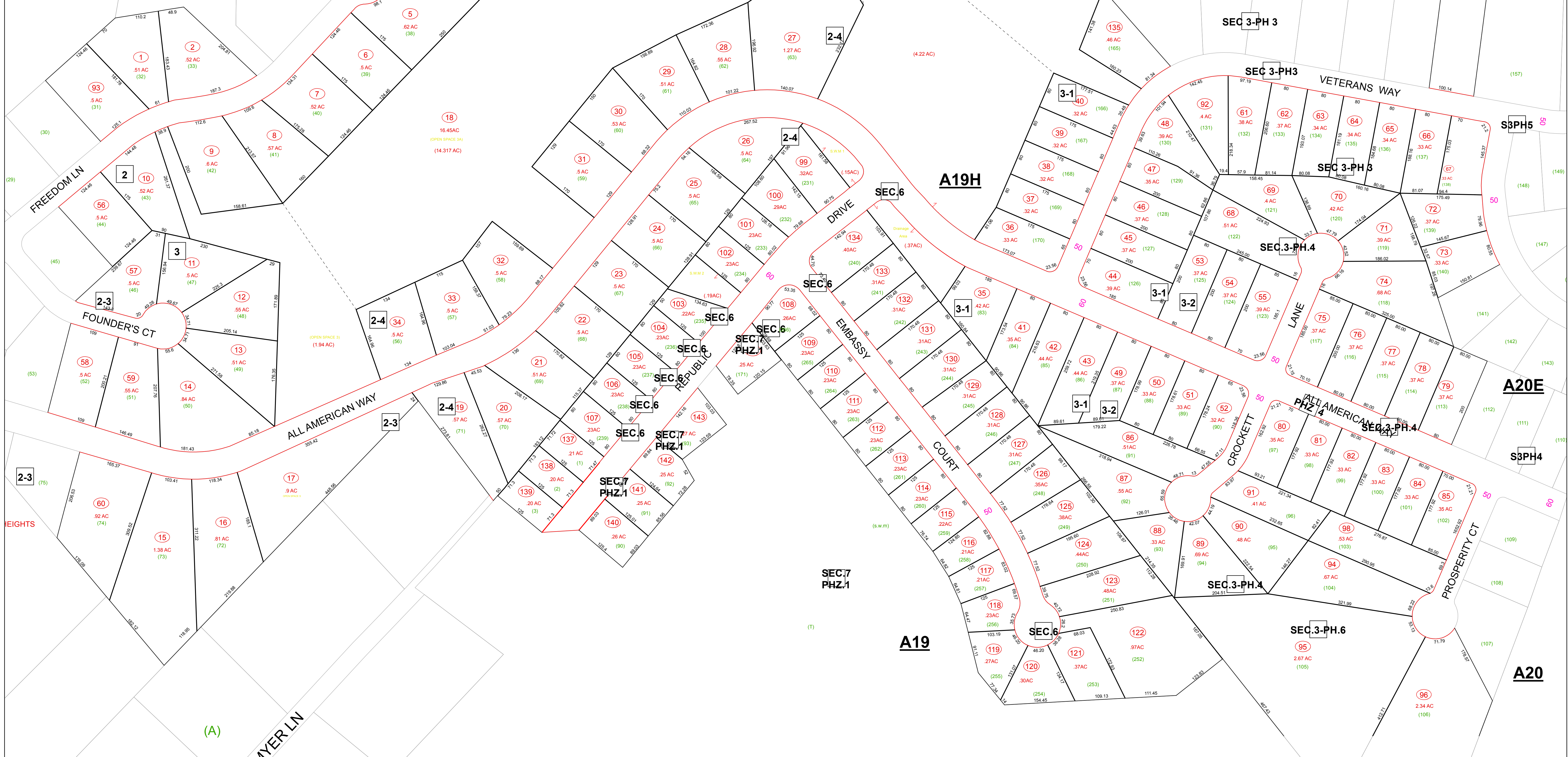
A19D

A19H

A19

A20E

A20



LEGEND

| | | |
|--------------------------|------------------------|------------------|
| (15) Lot Number | Property Line | District Line |
| (123) Parcel Number | Right-of-Way | County Line |
| 72 Block Number | Original Property Line | Water |
| (45/7) State Road Number | Easement | Corporation Line |

REVISION

| | |
|---|---------------------|
| 1 | Current to 2/6/2017 |
|---|---------------------|

Print Date: 2/6/2017

DISCLAIMER

The tax map was compiled for purposes of taxation from available record evidence and has not been field verified. This map is not a valid survey plat and the data on this map does not imply any official status to such data. The State of West Virginia and county assessor's office assume no liability that might result from the use of this map. Use of this map does not substitute for appropriate and proper title research.

RESTRICTION

All tax maps created under the provisions of reappraisal legislation are the property of the Berkeley County Assessor and the reproduction, copying, distribution or sale of such tax maps or any copies thereof without written permission of the Berkeley County Assessor is prohibited by law.

KEY MAP

| | | |
|------|------|------|
| A19C | A19D | A20 |
| A19G | A19H | A20E |
| A19L | A19 | A20 |

COUNTY OF BERKELEY
STATE OF WEST VIRGINIA
Office of Assessor

For Tax Purposes Only

A19H

Date, Aerial Photography: _____
Photo No: _____

Map Tax Year: 2017
Scale: 1" = 100'